

## → ceramic (plus)

# Installation Instructions

No. 9412 - R - 04

Edition: Oct 2009

## 1. Application Sector

**DAMTEC® ceramic (plus)** is a special insulation underlay made with pure rubber required by Stoneware and ceramic tile floors. Designed to hold up under heavy-duty loads, **DAMTEC® ceramic (plus)** provides the support needed by these rigid and heavy floor materials. It provides reliable protection against resonant vibration which can occur under tile and stoneware floors and has outstanding resiliency for maximum durability and compressive stability.

## 2. Substrate

Check and prepare the substrate in accordance with accepted construction practice. All substrates must conform to the national sub base regulations. They must be level, clean, firm, stable bearing, free of cracks, free of substances which reduce adhesion (e.g. oil, dust, abrasion debris, old paint etc.) and dry.

If necessary use levelling compounds or primers. Check the usage instructions of the adhesive manufacturer(s) for possible special procedures to follow over levelling compounds or primers if used.

## 3. Storage / Preparation

**DAMTEC® ceramic (plus)**, the insulating underlay, should be stored in dry areas at constant temperature.

Place the underlay over the entire surface to be covered, laying it perpendicular to the subsequent laying direction of the floor finish. Trim to size slightly larger than the surface covered. For **DAMTEC® ceramic plus** the side with fleece is the lower side.

Leave the underlay in place for one day (min. 24 hours) to allow dimensional relaxation and temperature equilibration. Allow appropriate time for temperature equilibration of adhesives and floor finish materials as specified by their manufacturers' instructions.

## 4. Installation

Trim **DAMTEC® ceramic (plus)** to the exact dimensions of the surface covered. Then fold back to the middle of the room and glue the underlay to the substrate, observing the instructions of the adhesive and floor finish manufacturers. For this put in **DAMTEC® ceramic**, **DAMTEC® ceramic plus** with the lower fleece side, without fold into the fresh

Page 1/4

## → ceramic (plus)

## Installation Instructions

No. 9412 - R - 04

Edition: Oct 2009

mortar and use the smooth side of a notched trowel or a smoothing trowel and press in slightly and wipe off in such a way that no cavities under the mat remain. We recommend smoothing from the mat centre outwards.

The second half of the room has to be done with same procedure.

When gluing the underlay, leave sufficient clearance to walls and adjacent structural components as required by the floor finish used. For an optimal decoupling and impact sound insulation always put on and push the mats closely. When installing tiles immediately scrape out mortar cleanly from the joints of the mats and push the mats together again. For avoiding of mortar bridges the joints of the mats can be covered with a suitable duct tape.

### 5. Installation of Floor Finish

The floor finish can be laid without fixing or cemented in place. In either case, install it in accordance with manufacturer's recommendations.

### 6. Important Hints

Castor chair behaviour and residual indentation after static loading of the flooring can change in accordance with the insulating underlay used. Only use underlay approved by the floor manufacturer. Prior to any installation work, carefully read and observe the usage instructions and processing guidelines of the adhesive cement and floor finish manufacturers. In case of doubt, please contact the manufacturer's applications engineering department for advice.

#### DISCLAIMER:

The information provided is intended only as a summary and general overview on matters of interest. The information is not intended to be comprehensive nor does it constitute expert advice. KRAIBURG RELASTEC shall not be liable for incidental and/or consequential damages directly or indirectly sustained, nor any loss caused by not complying with relevant industry/product standards and improper use of any Damtec® products. Due to varying construction methods, any other circumstances not stated above should be brought to the attention of KRAIBURG RELASTEC for review. For suitability to the prevailing site conditions, it is advised that certified testing should be conducted. It is recommended to seek further advice on your application with our technical staff prior to use.

The installation instruction is not subject to any change service! All information is without guarantee. Latest version of this document available on [www.kraiburg-relastec.com/damtec](http://www.kraiburg-relastec.com/damtec)

## → ceramic (plus)

### Installation Instructions

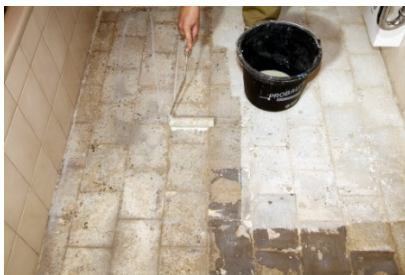
No. 9412 - R - 04

Edition: Oct 2009

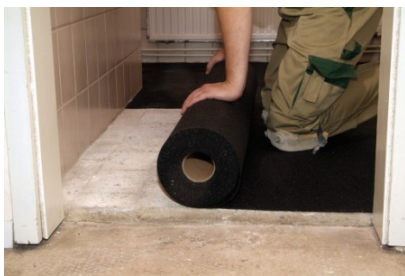
#### 7. Installation with ceramic tiles



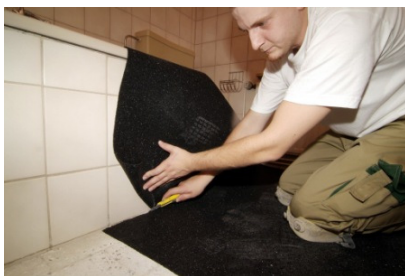
1. Remove old and loose tiles if necessary. The substrate must be levelled and clean.



2. If necessary use levelling compounds or primers.



3. Place **DAMTEC® ceramic** over the entire surface to be covered. Trim to size slightly larger than the surface covered. Leave the underlay in place for one day to allow dimensional relaxation and temperature equilibration.



4. Trim **DAMTEC® ceramic** to the exact dimensions of the surface covered. For **DAMTEC® ceramic plus** the side with fleece is the lower side.

## → ceramic (plus)

### Installation Instructions

No. 9412 - R - 04

Edition: Oct 2009



5. Fold back **DAMTEC® ceramic** to the middle of the room and glue the underlay to the substrate, observing the instructions of the adhesive and floor finish manufacturers



6. Put in **DAMTEC® ceramic**, **DAMTEC® ceramic plus** with the lower fleece side, without fold and rub and press carefully. For the second half work in same way.



7. The installation of ceramic tiles has to be done in accordance with adhesive and floor finish manufacturers' recommendations.



8. In case of doubt make a trial or ask manufacturer for technical advice.