



**K** KRAIBURG  
RELASTEC



# ACOUSTIC INSULATION

made from recycled rubber

resilient, reliable and durable

**DAMTEC**<sup>®</sup>

## **DIRECTLY UNDER FLOOR COVERING**

### **DAMTEC<sup>®</sup> standard**

DAMTEC<sup>®</sup> standard is the universal product for impact sound insulation. This underlay can be used under parquet, laminate, carpeting and ceramic tiles as well as under linoleum and PVC flooring and reduces unwanted noise – within your own four walls and those of your neighbours as well. DAMTEC<sup>®</sup> standard may be loose laid or glued, according to the application and requirements. DAMTEC<sup>®</sup> standard ensures a pleasant work or residential environment and is well suited for use in a wide range of applications.

### **DAMTEC<sup>®</sup> color G**

DAMTEC<sup>®</sup> color G is grinded on one side and with its special selection of raw materials excellent below linoleum and PVC flooring. Its plasticizer-free formulation, which prevents softener migration and floor finish discoloration, as well as its grinded surface eliminate the need for a separating layer between the underlay and the floor covering. With its mixture from natural raw materials – rubber and cork – DAMTEC<sup>®</sup> color G is an excellent insulating underlay for floors in residential and other buildings. DAMTEC<sup>®</sup> color without grinded surface is also suitable under parquetry and laminate floors as well as under textile floors.

### **DAMTEC<sup>®</sup> ceramic (plus)**

Stoneware and ceramic tile floors require special insulation. Designed to hold up under heavy-duty loads, DAMTEC<sup>®</sup> ceramic (plus) provides the support needed by these rigid and heavy floor materials. It provides reliable protection against resonant vibration which can occur under tile and stoneware floors and has outstanding resiliency for maximum durability and compressive stability.

### **DAMTEC<sup>®</sup> resistant cork**

Whenever the acoustic underlay must comply with high requirements of the structural fire protection (B1, C<sub>fl</sub>-s1), then DAMTEC<sup>®</sup> resistant cork is the ideal acoustic underlay, suitable for residential and commercial buildings. With its special selection of raw materials, DAMTEC<sup>®</sup> resistant cork is of low flammability. It can be laid under parquetry and laminated floor, under textile floors as well as ceramic tiles. For the application under PVC and linoleum we recommend DAMTEC<sup>®</sup> resistant cork G, which is grinded on one side.

## **UNDER SCREED / ON WOODEN SUBFLOORS**

### **DAMTEC<sup>®</sup> estra**

DAMTEC<sup>®</sup> estra is the ideal rubber underlay under floating screed /concrete slab or underneath rigid floor elements on wooden subfloors, providing outstanding elasticity and extremely high resistance to compressive loads. It is equally well suited for applications in residential, office and commercial buildings. DAMTEC<sup>®</sup> estra is particularly quick and easy to install. It provides a wide range of benefits under screed or rigid floor elements including long service life and superb strength.

### **DAMTEC<sup>®</sup> 3D**

DAMTEC<sup>®</sup> 3D is a rubber underlay for under floating screed, with an on one side profiled surface. Especially in commercial and industry buildings, e.g. supermarkets and storehouses, DAMTEC<sup>®</sup> 3D provides long service life and reliable impact sound reduction. DAMTEC<sup>®</sup> 3D is our dimpled alternative to conventional impact sound insulation under screed.

### **DAMTEC<sup>®</sup> system**

DAMTEC<sup>®</sup> system is the premium insulating padding for concrete or wooden subfloors. It provides outstanding impact sound deadening properties under screed or rigid floor elements. DAMTEC<sup>®</sup> system is characterized by a very low dynamic stiffness. Its special design and granular-textured surface ensure superior acoustic insulation especially in the low frequency range, the most difficult part of impact sound insulation. DAMTEC<sup>®</sup> system is ideal for use on wooden subfloors in combination with flooring of various types, generating high market demand particularly in the refurbishment sector.



# DAMTEC<sup>®</sup> DIRECTLY UNDER FLOOR COVERING

## 1 DAMTEC<sup>®</sup> standard



\_\_\_\_\_ parquet (or other floor coverings)

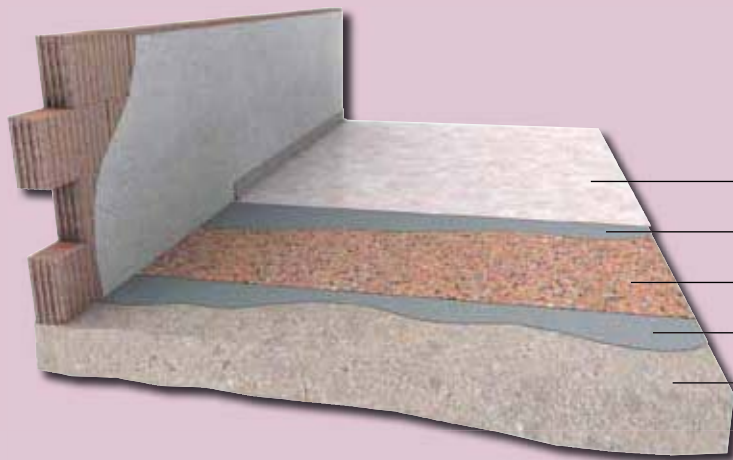
\_\_\_\_\_ adhesive (may be laid loose)

\_\_\_\_\_ DAMTEC<sup>®</sup> standard

\_\_\_\_\_ adhesive (may be laid loose)

\_\_\_\_\_ subfloor (e.g. concrete)

## 2 DAMTEC<sup>®</sup> color G



\_\_\_\_\_ PVC / linoleum

\_\_\_\_\_ adhesive

\_\_\_\_\_ DAMTEC<sup>®</sup> color G

\_\_\_\_\_ adhesive

\_\_\_\_\_ subfloor (e.g. concrete)

## 3 DAMTEC<sup>®</sup> ceramic (plus)



\_\_\_\_\_ ceramic tiles

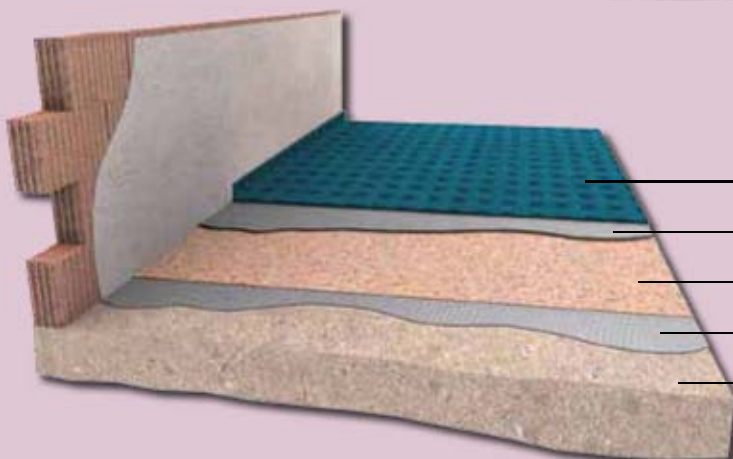
\_\_\_\_\_ adhesive

\_\_\_\_\_ DAMTEC<sup>®</sup> ceramic (plus – with geotextile)

\_\_\_\_\_ adhesive

\_\_\_\_\_ subfloor (e.g. concrete)

## 4 DAMTEC<sup>®</sup> resistant cork



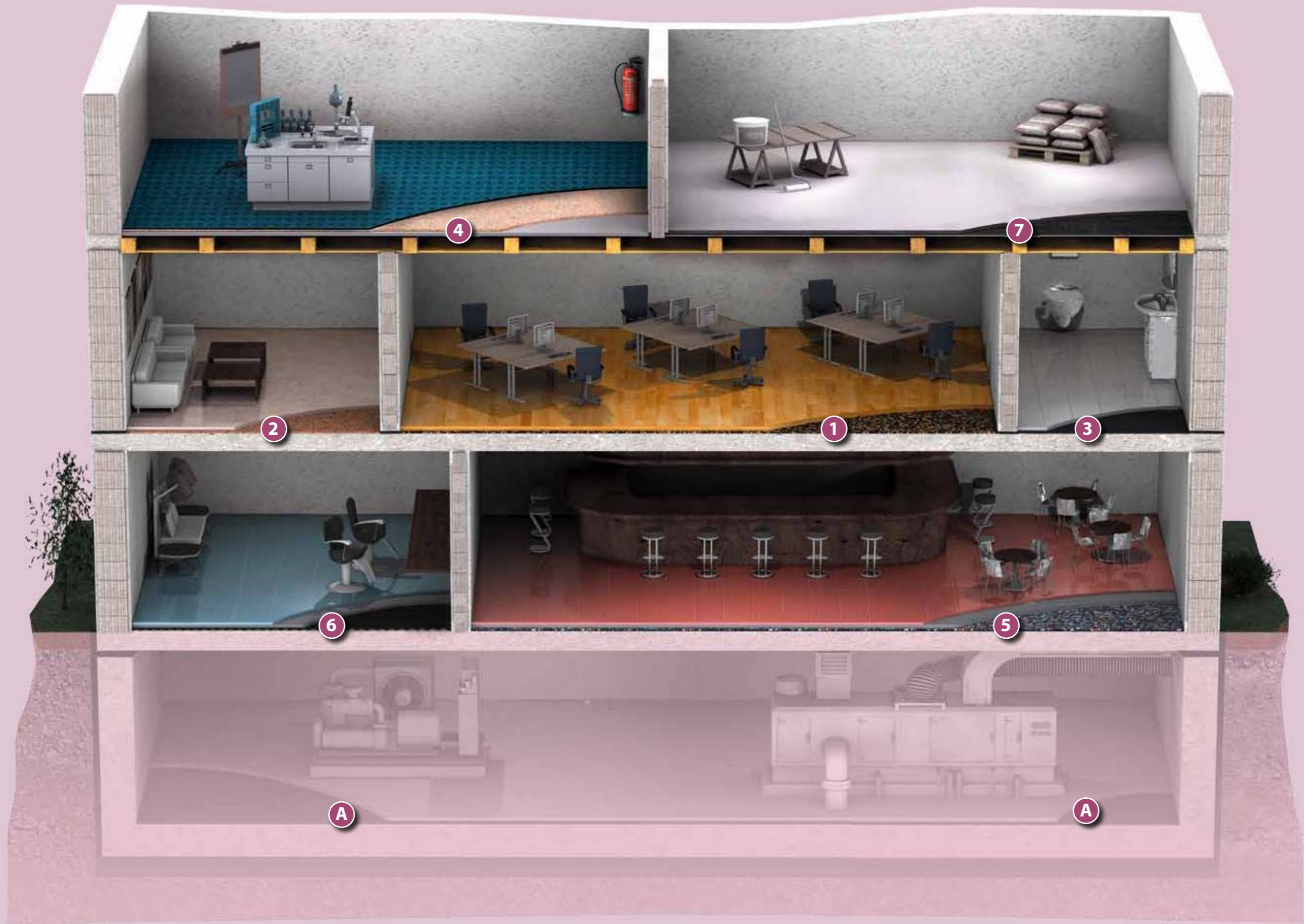
\_\_\_\_\_ carpet (or other floor coverings)

\_\_\_\_\_ adhesive (may be laid loose)

\_\_\_\_\_ DAMTEC<sup>®</sup> resistant cork

\_\_\_\_\_ adhesive (may be laid loose)

\_\_\_\_\_ subfloor (e.g. concrete)

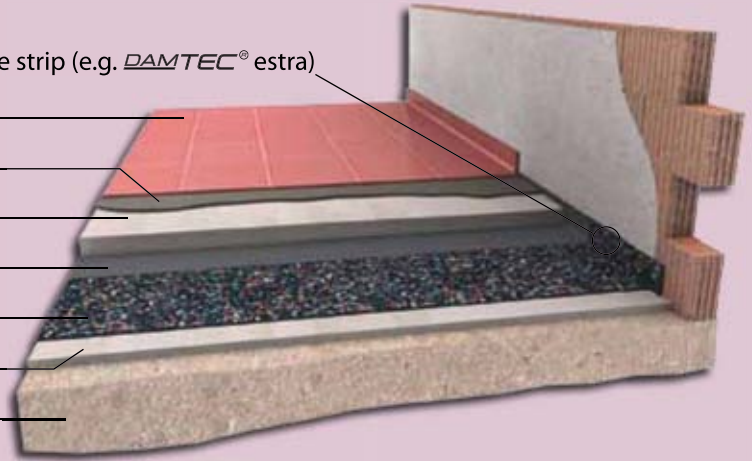


# DAMTEC® UNDER SCREED / ON WOODEN SUBFLOORS

## 5 DAMTEC® estra

- floor covering (e.g. tiles) \_\_\_\_\_
- adhesive \_\_\_\_\_
- screed/concrete slab \_\_\_\_\_
- PE membrane \_\_\_\_\_
- DAMTEC® estra \_\_\_\_\_
- levelling layer (where necessary) \_\_\_\_\_
- concrete subfloor \_\_\_\_\_

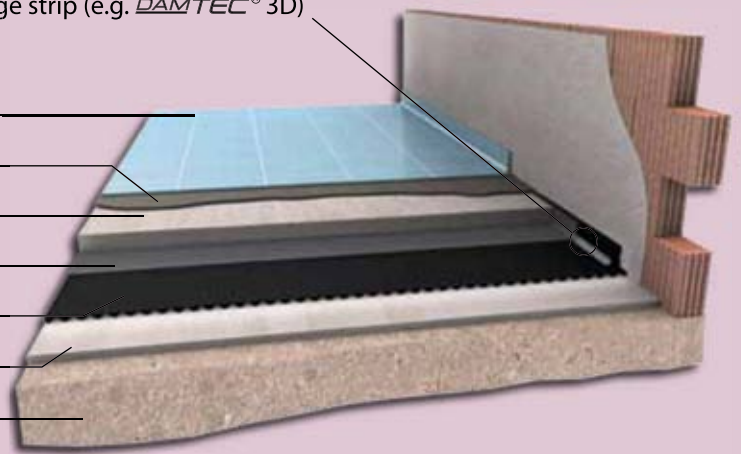
edge strip (e.g. DAMTEC® estra)



## 6 DAMTEC® 3D

- floor covering (e.g. tiles) \_\_\_\_\_
- adhesive \_\_\_\_\_
- screed/concrete slab \_\_\_\_\_
- PE membrane \_\_\_\_\_
- DAMTEC® 3D \_\_\_\_\_
- levelling layer (where necessary) \_\_\_\_\_
- concrete subfloor \_\_\_\_\_

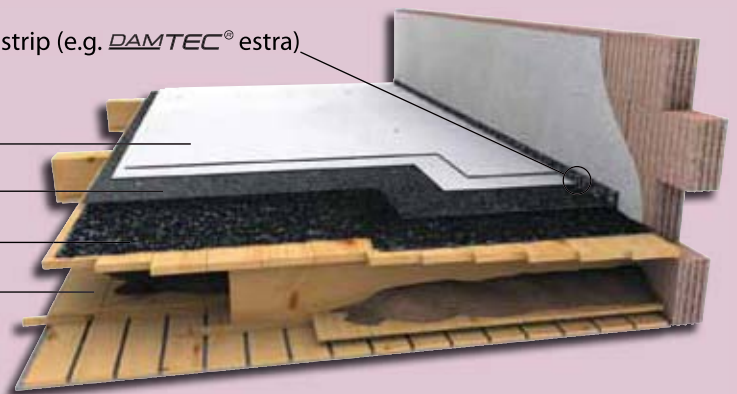
edge strip (e.g. DAMTEC® 3D)



## 7 DAMTEC® system

- rigid floor element (e.g. plasterboard 2x) \_\_\_\_\_
- DAMTEC® system \_\_\_\_\_
- DAMTEC® system \_\_\_\_\_
- wooden subfloor \_\_\_\_\_

edge strip (e.g. DAMTEC® estra)



## A DAMTEC® vibra – OUR PRODUCT LINE FOR VIBRATION INSULATION / VIBRATION ABSORPTION

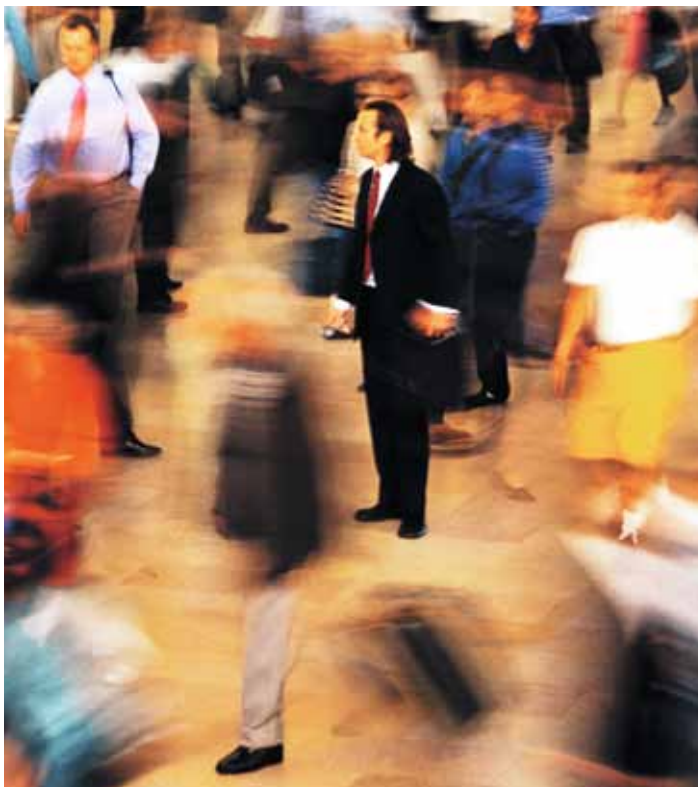
e.g. ground vibrations · structure-born vibrations of machines · elevator motors · pumps · ventilation systems  
tunnel/railway construction · etc.

**For further information please contact:**

E-Mail: [damtec@kraiburg-relastec.com](mailto:damtec@kraiburg-relastec.com) · Fon: +49-(0)8683-701-142

# ***DAMTEC***<sup>®</sup>

## FEATURES AND BENEFITS



- Outstanding impact sound deadening in residential and commercial floors
- Eliminates hollow clicking sounds and reverberations (floor to ceiling noise) under hard flooring
- Can be loose laid (always lays flat and will not slip during installation)
- May be used for glue-down applications (glued to the subfloor and/or to the flooring above)
- Cushioning effect increases underfoot comfort in combination with carpeting
- Meets and exceeds tough acoustic building requirements while only slightly adding to overall floor height
- Excellent thermal conductivity, ideal for use with underfloor heating/cooling systems
- Can be used over a wide service temperature range
- Outstanding compressive strength and load-bearing performance
- Highest resiliency even after years of use (does not compress and reduce sound absorption)
- Superior resistance to moisture absorption and rot degradation
- Environment-friendly (made from recycled rubber, can be recycled again)
- very low in emission



***DAMTEC***<sup>®</sup>

Tests were carried out at Fraunhofer Institute for Building Physics Stuttgart, SWA Aachen, CSTB Paris, TNO Delft, MA39 Vienna, TFI Aachen, MPA Braunschweig, IHD Dresden. Our DAMTEC<sup>®</sup> products were also tested by numerous adhesive manufacturers.

We shall be glad to send you test reports and adhesive recommendations on request.

We would gladly assist you by selecting the correct product for your requirements. According to the impact sound requirements, existing or planned flooring systems / floor finishes and required screed thicknesses, we are at your disposal for an application-specific consulting to achieve the optimal impact sound insulation.

***DAMTEC***<sup>®</sup>


**ACOUSTIC INSULATION**

made from recycled rubber

**Gummiwerk KRAIBURG RELASTEC GmbH**  
Fuchsberger Straße 4 · D-29410 Salzwedel

Fon +49-(0)8683-701-142  
Fax +49-(0)8683-701- 4 142  
E-Mail [damtec@kraiburg-relastec.com](mailto:damtec@kraiburg-relastec.com)  
Internet [www.kraiburg-relastec.com/damtec](http://www.kraiburg-relastec.com/damtec)

© Gummiwerk KRAIBURG RELASTEC GmbH 2009  
Layout makrohaus, Bad Reichenhall,  
Image "eye", [www.photocase.com](http://www.photocase.com)  
Print Lippl, Tittmoning

 **Made in  
Germany**



 **qualityaustria**  
**SYSTEM CERTIFIED**  
ISO 9001:2008 No.00186/0